



# A Simple Dress

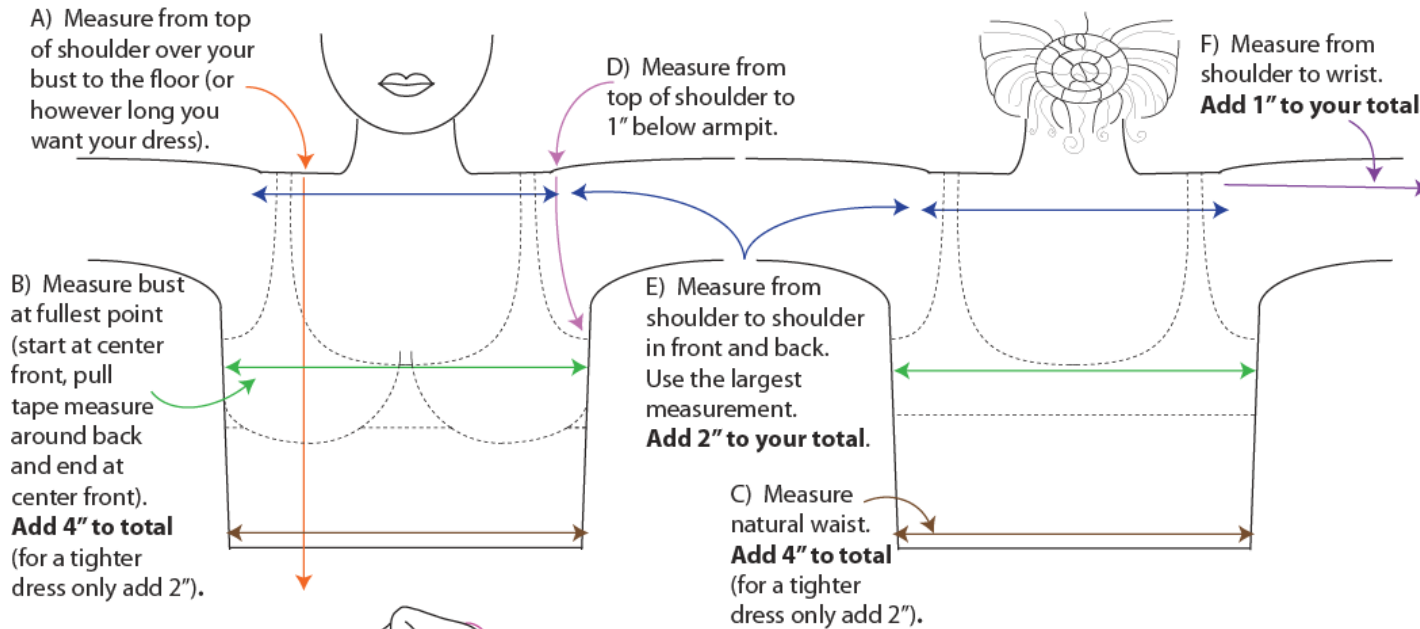
*Duchesse Sabine de Rouen, OP*

This dress can be worn under a Norse Apron or as an over or under dress.  
It is perfect in linen, silk, or a light-weight wool.

READ ALL OF THE INSTRUCTIONS BEFORE YOU BEGIN.

If using linen or cotton please wash, dry, and iron your fabric prior to cutting your garment.

## Taking the Measurements

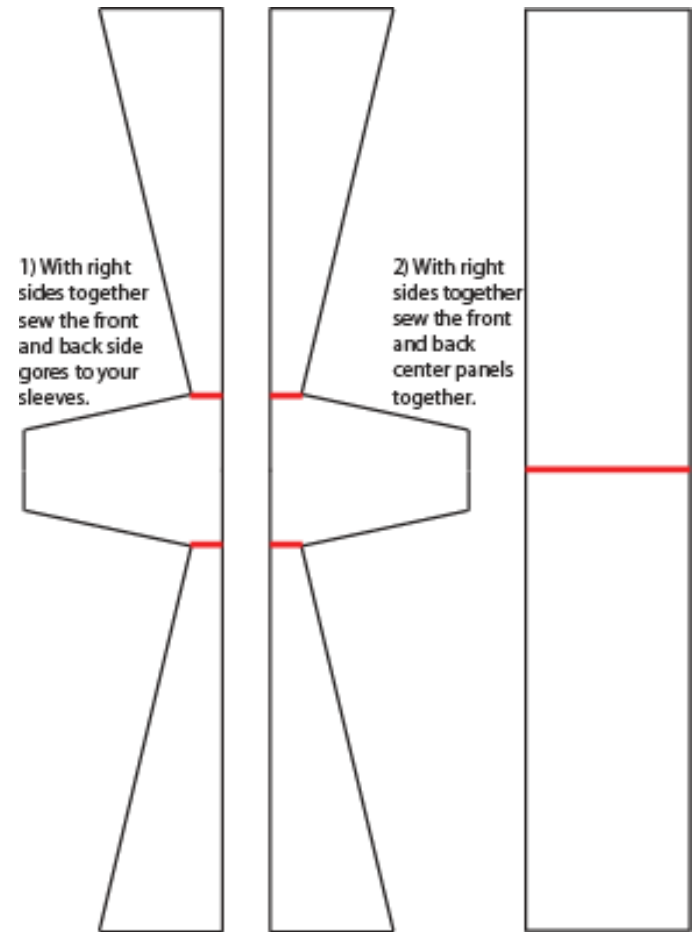
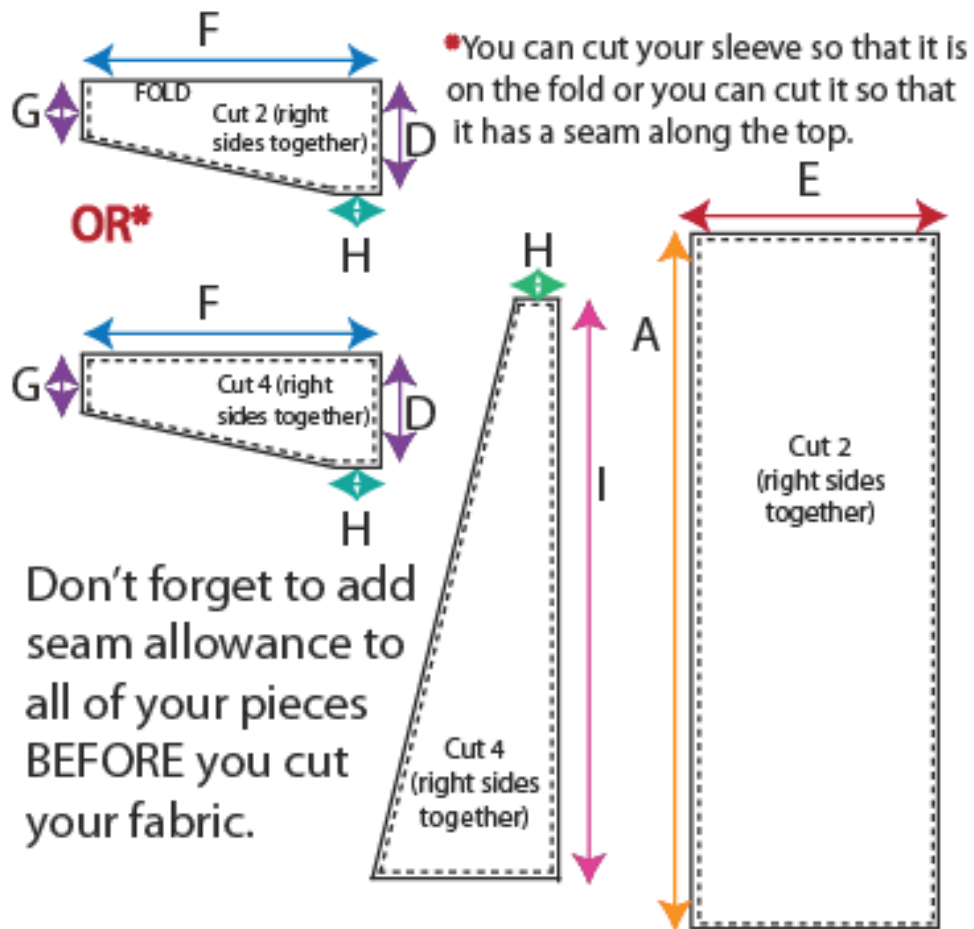


G) Make a fist and measure around your fist over the fullest part (usually your knuckles and thumb). **Divide by 2.**



H) To determine measurement H  $B - (2 \times E) = ?? / 4 = H$  (Measurement B minus measurement E x 2 equals ?? divided by 4 equals measurement H).

I) To determine measurement I  $A - D = I$  (Measurement A minus measurement D equals measurement I).



Notes: \_\_\_\_\_

\_\_\_\_\_

\_\_\_\_\_

\_\_\_\_\_

### 3) Create your neck opening.

Measure circumference of head.

*Example: 22"*

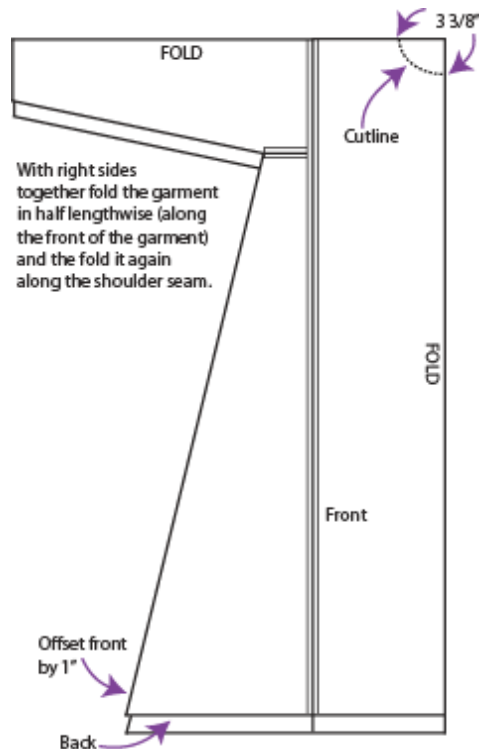
Divide your total neck measurement by 6.

*Example:  $22" / 6 = 3 \frac{5}{8}"$*

Subtract  $\frac{1}{4}"$  for seam allowance.

*Example:  $3 \frac{5}{8}" - \frac{1}{4}" = 3 \frac{3}{8}"$*

Fold the center panels into quarters (the shoulder seam being the top fold). Offset front layer of fabric by 1". Front will be shorter than back while cutting neck only. Mark fabric with measurements and cut curved line between points. Your back neck line will be higher than your front neck line.



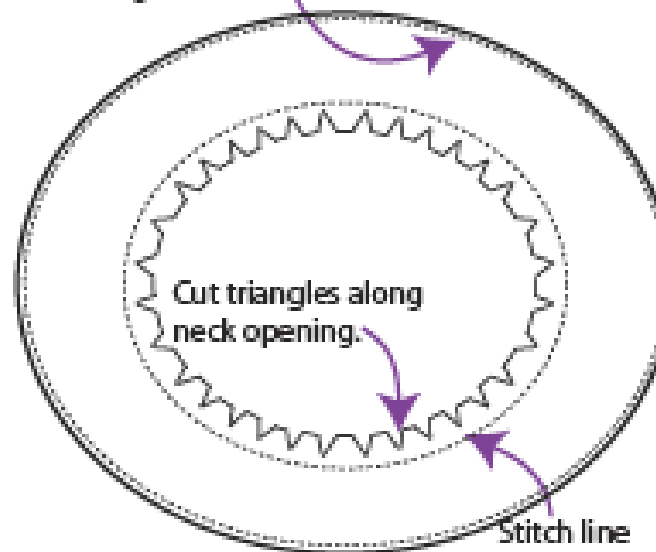
### Facing

Just as you cut the neck opening in your dress you fold the fabric into quarters. Offset front layer of fabric by 1". Front will be shorter than back. Mark fabric with measurements and cut curved line between points. Shape outside edge of facing making sure that you leave at least 2" on all sides. Pin facing into place. Stitch around neck opening. Snip small triangles along seamed edge – cutting almost to stitch line.

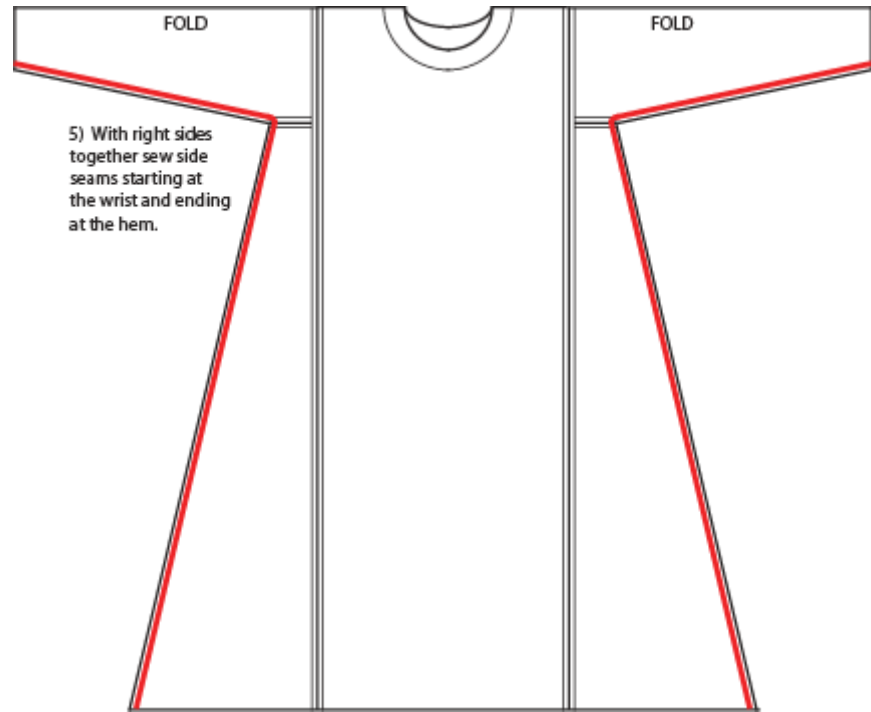
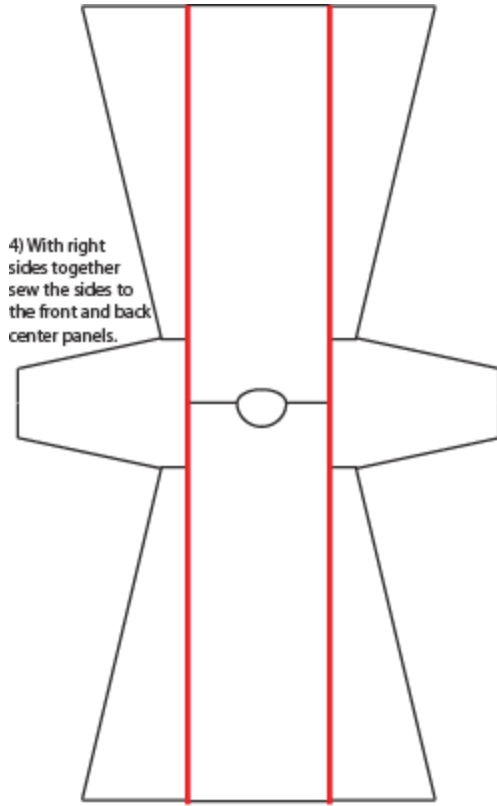
Pull facing through neck opening. Use an awl to push out corners. Iron flat. Turn outer edge under and stitch down. If turned out as decorative facing you can just stitch down without turning under and cover with trim.

*Note: Self facing is sewn to the right side of the fabric and pulled through neck opening to be sewn to the inside of the garment. Decorative facing is sewn to the wrong side of the fabric and pulled through neck opening to be sewn to the outside of the garment.*

Outside edge will be turned under and stitched down.



*Modern Tip: You can add extra strength by adding an anti-fray compound such as Dritz Fray Check™ to ensure that cuts close to the stitch line do not fray once it is turned.*



Notes: \_\_\_\_\_  
\_\_\_\_\_  
\_\_\_\_\_  
\_\_\_\_\_